

SPECTRUM

SAFETY NEWSLETTER

PIC RESPONSIBILITIES

→ SELECTING A SUITABLE DESTINATION

- You must remain in Canada, the USA, or the Bahamas
- Flight over water is prohibited
- Use of unpaved runways is prohibited
- Unless you have prior permission, you must arrive back at Spectrum Airways by 23:00 local

→ FUEL



- The PIC is responsible for ensuring sufficient fuel
- When you purchase fuel at another airport, you will be reimbursed at \$1.05/litre. A photocopy of your receipt will be made, and the fuel credit will be deducted from your balance due

→ LANDING FEES

- You are responsible for any Landing Fees that you incur

→ MINIMUM TIMES

- You will be invoiced for a *minimum* of:
WINTER (December 15 – March 14)
 - Weekdays: 2 hours
 - Weekends and Holidays: 4 hours**SUMMER (March 15 – December 14)**
 - Weekdays: 3 hours
 - Weekends and Holidays: 5 hours

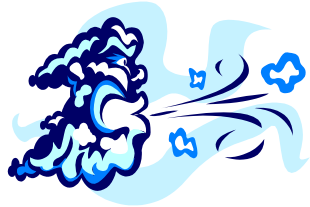


Minimum Times:

- If you fly less than the minimum times, you will be invoiced for the minimum times
- If you fly more than the minimum times, you will be invoiced for the time flown

→ OVERNIGHT

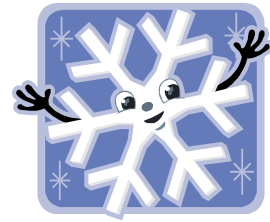
- Extended bookings may require a deposit on account prior to rental
- You accept **responsibility for the care and control of the aircraft**, you should make arrangements ahead of time



- If it is forecast to be windy, you must securely tie it down, or arrange for the aircraft to be put in a hangar

- If **thunderstorms** are forecast, the aircraft **must be left in a hangar**

- If **snow or icing** are forecast, the aircraft **must be left in a hangar**



- If temperatures are forecast to be **below freezing** the aircraft **should be left in a hangar and plugged in prior to start-up.**

- It is a good idea to travel with tie-down ropes and wheel chocks, (*you should not expect Spectrum Airways to provide these*)